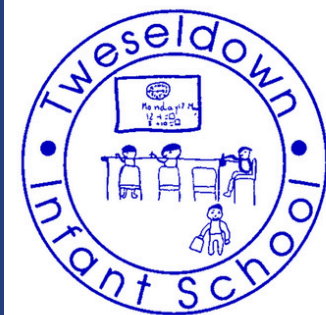
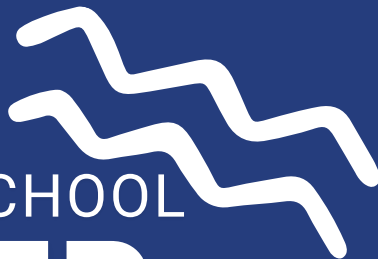


05/02/2026
TWESELDOWN INFANT SCHOOL
NEWSLETTER



DIARY DATES

FEBRUARY

10th February - Lunar lunch

11th February - Owl class assembly 9am
- Parents Evening

12th February - Parents Evening

13th February - Celebrating 'Founders Day'

24th February - Year R school trip to Wisley

26th February - Year 1 school trip to Wisley

27th February - PTFA mufti day

TERM DATES 2025/2026

16th February - 20th February - Half Term

25th May - 29th May - Half Term

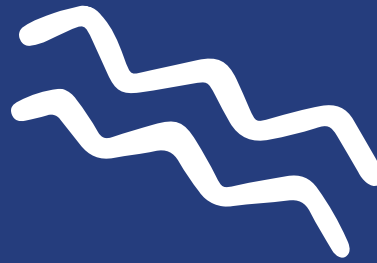
23rd February - Inset Day (closed to pupils)

29th June - Inset Day (closed to pupils)

30th March - 10th April - Easter Break

22nd July - Last Day of School

IMPORTANT INFORMATION



LUNAR LUNCH

On Tuesday 10th February, we will be having a Lunar lunch - The Lunar New Year lunch is a celebration of the first new moon of the lunar calendar. The event is celebrated by numerous cultures and in various different ways. Please see the menu for this day attached to the end of this newsletter.

PARENTS EVENING

Please note you must have a parents evening appointment booked with your child's teacher by Monday 9th February - This should be done through Arbor. Please action this as soon as possible. Thank you.

DEER CLASS

Mr Harris-Hooton will be working in another school for 6 weeks from Monday 9th February and will be returning on 23rd March. In the meantime we are delighted to welcome Mrs Deionne Coburn for 6 weeks who will be working alongside Mrs Russell.

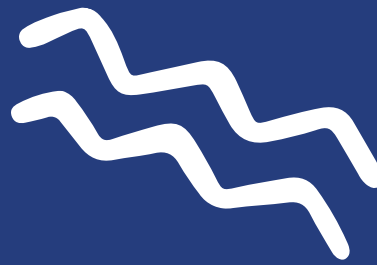
SCHOOL CROSSING PATROL - SANDY LANE

A reminder that the School Crossing Patrol Officer on Sandy Lane will not be in attendance until after February half term. Please ensure you take extra care when crossing the road during this time.

360 SPORTS EDUCATION - HALF TERM CAMP

360 Sports Education will be holding their fun and energetic multi-activity and football camps at our school during February half term. There are still a few spaces! Please see the flyers attached below for further information on how to book.

IMPORTANT INFORMATION



COOL MILK

If you've signed your child up to receive cool milk, can you please have a conversation with them to ensure that they are consuming this when at school. If they are no longer drinking this, please remove their subscription via the cool milk website

<https://coolmilk.com/>

DAILY KIT

Please can you ensure that your child is coming into school with all they need for that specific day. This includes; water bottle, snack, lunch, coat, PE kit, waterproofs, BTG clothes etc.

CELEBRATING FOUNDERS DAY

On Friday 13th February we will celebrate 'Founders Day'. Founders Day marks the birth of Robert Baden-Powell, the founder of Scouts - We will be taking part in some fun activities. If your child has a Beavers/Cubs/Brownies/Rainbows uniform, they can wear it to school on this day.

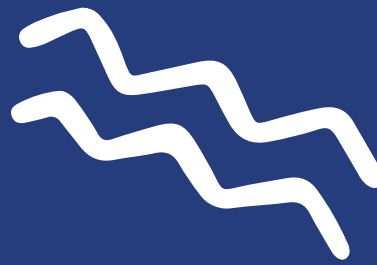
TEACHER TRAINING - INFORMATION EVENT

South Farnham SCITT are holding a teacher training drop-in information event on Friday 13th March from 12-4pm here at Tweseldown. For further information, please see the flyer attached to the bottom of this newsletter.

SMART WATCHES

Please ensure that your child does not wear a smart watch to school. These are not permitted and will need to be removed if they are seen.

IMPORTANT INFORMATION



OWL ASSEMBLY

Owl class have their assembly on Wednesday 11th February at 9am. Caleb's Coffee will be outside the front of the school should parents/carers like to treat themselves to something nice!

MEMORY MAKERS

Please can children bring in their memory maker booklets on Friday 13th February.

HALF TERM

A reminder that half term is the week of 16th - 20th February. Please remember there is also an INSET day on 23rd February.

ROBIN CLASS

Mrs McFarlane's last day prior to maternity leave is Friday 13th February. After half term, Mrs Premier-Scaife will return to full-time class teaching.

YEAR R AND YEAR 1 WISLEY TRIPS

The Year R trip to Wisley will be taking place on Tuesday 24th February with the Year 1 trip taking place on Thursday 26th February. Please don't forget to return the digital form and pay for this via Arbor.

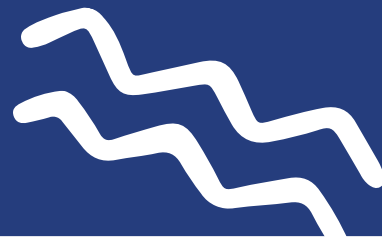
PANCAKE RACES

On Wednesday 25th February we will be having pancake races at Tweseldown! This is a fun event just for pupils.

MUFTI DAY

There will be a PTFA mufti day on Friday 27th February. Please bring £1 - Thank you.

IMPORTANT INFORMATION



We have two baby items in our reception area - The fabric on both has been washed and these are ready to go to a new home.

If you would like one, free of charge, please come to reception.
Thank you.



RECEPTION

This week in English the children have been drawing and writing about what they want to be when they grow up. We have heard some wonderful ideas, such as police officers, fire fighters and even ice cream makers! The children also wrote about where they want to live and which magical adventures they would like to go on. They practised writing CVC words and simple sentences.

In Maths this week we have been representing 6 as '5 and a bit'. We sang the song '5 little aliens in a flying saucer' before exploring the different ways 6 can be made using dice frames. Can you ask your child how many ways they can make 6?

We have also been learning about Lunar New Year and how this is celebrated around the world. Today, we were lucky enough to experience a Chinese dance workshop and learn about Chinese culture.

Next week, we have Science Day on Thursday 12th February. We can't wait to do lots of fun experiments together! Please bring in any plastic bottles and/or recycling you have at home.

YEAR 1

This week in Year One we have enjoyed revisiting the 'You Choose' story. We have created some of our own stories verbally and decided what we would like to have, wear, eat, do for fun, visit and be transported in. There have been some amazing ideas and together we have created some brilliantly illustrated class pages! When writing about this story we have been focussing on adding -ing to different verbs. We learned that if the verb ends in an e then we need to drop this before adding the ing. What different verbs do you do when at home? Are you playing, tidying, washing, sleeping, jumping or dancing?

In maths, we have continued learning about 2-digit numbers and have really focussed on numbers 11 to 20. We have partitioned the numbers in different ways using part, part, whole models and written this as number sentences to show our understanding. We have looked at different ways that we can make the numbers and looked at where they sit on our hundred square. Can your child explain to you about these numbers being 10 and a bit? Fourteen is 10 and 4 more? Can they tell you all of the numbers like this? Perhaps you could count out some objects at home or spot the different teens door numbers?

Over the last week in Science we have been recording the weather and it has been quite varied! The children have enjoyed observing this and this week have created observation wheels to help them identify all of the different weathers. Lots of skills were needed when making these such as cutting, sharing, drawing and helping each other - it really was great to see! In Geography, we have focussed on recapping our human and physical features. Previously we have looked at these in our school grounds and now have thought about which different features we have in the local area. The children really enjoyed looking at different maps to spot places they know and really enjoyed exploring Google Earth to see the birds eye view of where we live. We have also been working on identifying where the UK is on different maps.

Next week, we have science week in school and we need some resources to help make the day a success. Please could we ask for donations of any plastic bottles no matter the size or shape - in fact the more different types we have the better! We also need containers such as yogurt pots, grape tubs, butter tubs, small cardboard boxes such as cereal boxes. Please hand these in to your class teacher.

YEAR 1 CONTINUED...

Year One Survey

Thank you so much to everyone who completed the Year One Parent Survey. It was really great to hear that so many of you find your classroom teams of teachers and assistant teachers so welcoming and approachable. Additionally, it is great to hear that you find that key information is shared with you. From the children's survey it was wonderful to hear that all children feel safe in school and they know what to do if they are feeling unsure about something.

Some parents have recently asked how we choose the weekly spelling lists. Each year group has a set of words specified in the National Curriculum that children are expected to spell confidently by the end of the year. In school, we link these words to our phonics teaching, so the children learn and practise them as part of their phonics lessons during that week. These are the spellings we then send home to support additional practise. If you have any further questions regarding this, please come and speak to your child's class teacher.

YEAR 2

Year 2 have continued working on division, this week. They have built on their learning of division as sharing and have shown that division can be done by grouping. For example, 10 can be divided into groups of 2 and there will be 5 groups. They have worked practically with different objects and they have drawn arrays.

In English, the children have been writing in role as the new neighbours of the pirate family The Jolley-Rogers from the book 'The Pirates Next Door' by Jonny Duddle. They acted in role as the neighbours and listed their complaints to the council! Complaints included the noise (from fixing the ship all night and using cannons) and their lovely view being spoilt. The children have been using apostrophes for possession, commas in a list and formal language in their letters.

It is Storytelling Week and the children have enjoyed hearing some of their classmate's favourite books. Thank you for bringing them in wrapped up. We will continue to share these books next week too. They have also heard stories in Guided Reading sessions and completed a variety of activities linked to them, including using puppets to re-tell a story.

In Science, the children are designing their own hybrid creature ensuring that they consider its habitat and its food chain. They will also enjoy making Bug Hotels - thank you for providing resources for this, we are extremely grateful!

BEYOND THE GATE

Volunteers: To enable our Beyond the Gate sessions to be as enriching as possible for the children and to maintain high ratios, we depend on volunteers to support our sessions. Without adequate volunteers sessions may need to be cancelled. Please take a look at the sign up sheet and see where you could help: volunteersignup.org/9MM99

Sign ups for Year One sessions, after half term will go live next week.

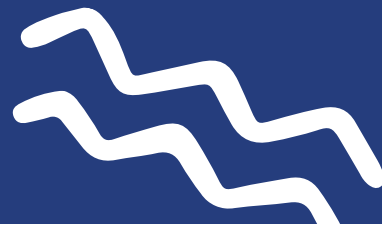
Blog: Remember to take a look at our Beyond the Gate blog, which is updated regularly with photos and information about the children's Beyond the Gate adventures. This is a great way to open up conversation about what your child did in school!

<https://www.tweseldowninfantschool.co.uk/page/?title=Forest+School+Blog&pid=277>

Donations: Mrs. Dear would be grateful for any of the following donations. Please put them in the yellow box in the front entrance:

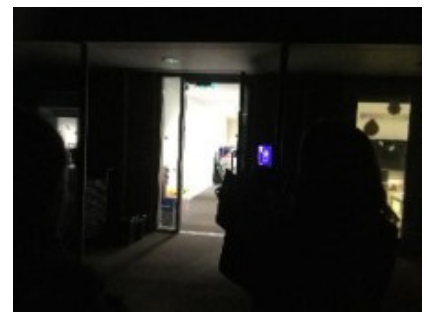
- Cardboard tubes (the inside of foil/kitchen roll)
- Lard
- Kindling
- Cotton Wool
- String or twine
- Craft pipe cleaners
- Bird seed (no peanuts) and fat balls

ECO SCHOOLS

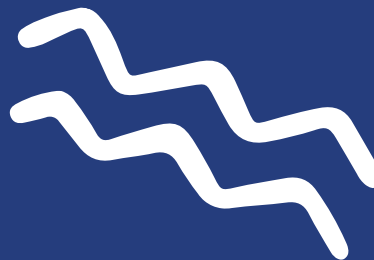


Thermal Imaging: Last Wednesday evening, as part of our actions towards whole school sustainability, Liz Vango, (the Sustainability and Climate Change Officer of Hart District Council) and members of her team visited to complete a thermal imaging survey of our school building.

This enabled us to identify temperature variants around the building; see how certain features help conserve heat inside our building and identify any inefficiencies. It was fascinating to see this process and notice how different features, such as blinds, can have a large impact on storing heat inside a building! The children will have this shared with them once we receive our report and photos.



Litter Picking Loan Equipment: We have two sets of litter picking equipment available to borrow over the weekends. It is a great way to get outside and have a positive impact on the environment and local area. Equipment can be collected from Ms. Fewtrell (Owl class) on a Friday and returned to her on Monday. Sign up here: volunteersignup.org/47KE9



Upcoming PTFA Events & Dates

Friday 27th February – PTFA mufti day: £1

Monday 2nd March – PTFA Zoom meeting at 20:00

Friday 13th March – Second-hand uniform sale from 14:45-15:15

Saturday 21st March – Spring Fair

Vacancy – PTFA Secretary

A vacancy has arisen for the PTFA Secretary role. Please contact Natalie or Vicky for more information at ptfa@tweseldown.hants.sch.uk.

Your School Lottery

Just a reminder that you are able to support our school via Your School Lottery. Tickets cost just £1 a week, with a guaranteed winner every week and a chance to win the £25,000 jackpot. This is a great way to help us raise funds for so many wonderful activities and resources for the children!

Please see the poster at the end of this newsletter for information and a link to the website. Alternatively, you can access this here: <https://www.yourschoollottery.co.uk/>

Spring Fair – Saturday 21st March

Our annual Spring Fair will be held on Saturday 21st March. We are very excited about this event and are in the midst of planning lots of fun activities for everyone to enjoy. We will be releasing further information soon, including a volunteer link. Please keep an eye out for this!

HELPFUL CONTACTS

CAMHS - Hampshire Child and Adolescent Mental Health Service – helping with emotional wellbeing and mental health for children aged 5-18 years old. <https://hampshirecamhs.nhs.uk/>

ERIC-Help coping with children bedwetting. <https://eric.org.uk/childrens-bladders/bedwetting/>

Family Lives -Co-parenting after divorce or separation. Free online help, or call for free on 0808 800 2222 <https://www.familylives.org.uk/>

Gingerbread -Advice and practical support for single parents <https://www.gingerbread.org.uk/>

Grief Encounter -Supporting bereaved children and young people.
<https://www.griefencounter.org.uk/>

Parentkind -Loads of resources for parents, covering many topics, including Common Sense Media; Fatherhood; Childcare Choices. <https://www.parentkind.org.uk/for-parents/parents-resources/parenting>

Psicon-A specialist team, offering the highest quality diagnostic assessments, treatment and support for Autism, ADHD and Mental Wellbeing. <https://www.psicon.co.uk/>

Relate -Get help with: counselling; mediation; supporting parent relationships; work place relationship support. <https://www.relate.org.uk/what-we-do/counselling/relationship-counselling>

Rainbow Trust -Support for seriously ill children and their families.
<https://www.rainbowtrust.org.uk/>

Safe Haven Aldershot -Drop in, 365 days a year for mental health crisis. 6-11pm, Monday – Friday; 12:30pm-11pm weekends and bank holidays.
Also available virtually using link: <https://nhs.vc/sabp/safe-haven-aldershot>

<https://www.sabp.nhs.uk/our-services/mental-health/safe-havens/SafeHavenAldershot>

Together for Short Lives -Family support team and helpline provides families of seriously ill children with emotional, financial and practical support and advice. Helpline: 0808 8088 100
<https://www.togetherforshortlives.org.uk/>

The Sleep Charity -Advice and support with bedtimes and sleep.
<https://thesleepcharity.org.uk/>

Winston's Wish -Bereavement charity supporting grieving children and families.
<https://winstonswish.org/>

Young Minds -A place of support if your child is struggling with anxiety.
<https://www.youngminds.org.uk/parent/parents-a-z-mental-health-guide/anxiety/>



February Half Term Multi-Activity Camp

New Venue: Tweseldown Infant School, Fleet

Dodgeball, Hide & Seek, Capture the Flag, Basketball and loads of fun team and individual activities for 4-12 year olds!



- Outdoor & Indoor activities
- Team & Individual sports
- Arts & Crafts
- Special Feature Activities, including Taekwon-Do, Dance and NERF!

Monday 16th - Friday 20th February

NEW

Tweseldown Infant School
Jubilee Dr, Church Crookham, Fleet GU52 8DW

Book a full week
and pay from as
little as £27.20
per day

DISCOUNTED RATES FOR TWESELDOWN PUPILS

Standard Day
9:30am - 4:30pm
£30

Extended Day
8:15am - 5:45pm
£35

Full Week Special
Standard Days £136
Extended Days £156

Book Now

360sportseducation.com

Secure online booking | Childcare Vouchers Accepted

FAST, SAFE, EASY



» SCAN «
TO BOOK



Special Feature Activities

We provide fun and enriching experiences that inspire and motivate young children, at no extra cost to you!



NERF Games

Mon 16 Feb (pm)



Arts and Crafts

Tue 17 Feb (pm)



Taekwon-Do

Wed 18 Feb (pm)



Dance

Thu 19 Feb (pm)



Intro to First Aid

Fri 20 Feb (pm)

FAST, SAFE, EASY



» SCAN «
TO BOOK

Tweseldown Pupils
pay discounted rates!

**Book
Now**

360sportseducation.com



February Half Term Football Camp

New Venue: Tweseldown Infant School, Fleet

Skills building and loads of football fun for 4-12 year olds!



- Daily team matches
- Game understanding
- 360 World Cup
- Goalkeeping, Attacking & Defending sessions

Monday 16th - Friday 20th February

NEW

Tweseldown Infant School
Jubilee Dr, Church Crookham, Fleet GU52 8DW

Book a full week and pay from as little as £27.20 per day

DISCOUNTED RATES FOR TWESELDOWN PUPILS

Standard Day
9:30am - 4:30pm
£30

Extended Day
8:15am - 5:45pm
£35

Full Week Special
Standard Days £136
Extended Days £156

Book Now

360sportseducation.com

Secure online booking | Childcare Vouchers Accepted

FAST, SAFE, EASY



» SCAN «
TO BOOK

- FEBRUARY -

PARSNIP

Fun Fact!
Say hello to
parsnips, they
look like pale
carrots but taste
oh-so-delicious!



**Parsnips contain
starchy
carbohydrates
to keep your
energy levels
up!**

**Celebrate the season of
parsnips with us!**

Celebrate
Lunar New Year
with us!

Tuesday
10th February 2026

Chicken Chow Mein Served
Steamed Broccoli

or

Sweet & Sour Vegetables with
Egg Fried Rice

and

Sticky Ginger & Orange
Cake



INFORMATION EVENT



Considering a career in teaching?

Would you like to train in a school in your local community?
Come and chat with a member of our friendly South Farnham
SCITT team and find out if teacher training is the career for you.

 Tweseldown Infant School, GU52 8DW

 Friday 13th March 2026

 Drop in anytime between 12-4pm

No need to book. Ask us about:

- Do I need experience?
- Which programme is right for me?
- What finance options are available?



FOR MORE INFO



scitt@sfet.org.uk



www.ssfscitt.org.uk

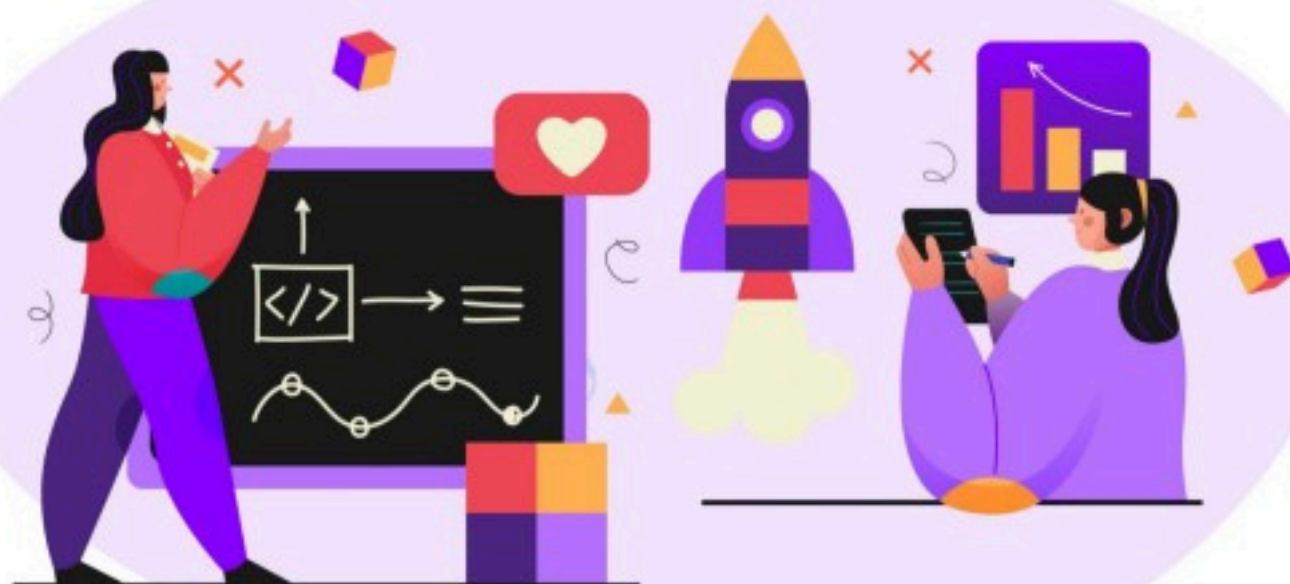




SUPPORT OUR SCHOOL PLAY OUR LOTTERY



- Tickets cost just £1 a week
- The easy way to help us raise funds
- Local cash prizes every week



PLAY NOW



GambleAware