



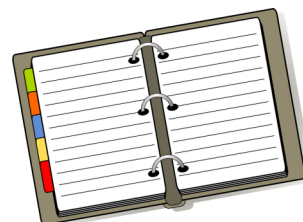
# Tweseldown News

Thursday 22nd February 2024

## Diary Dates

### February 2024

Thursday 22nd	World Thinking Day
Monday 26th	Spring into action—walk to school week 9.00 Rabbit Class meet the teachers in School Hall
Tuesday 27th	Finkley Down Farm—Hedgehog and Squirrel
Wednesday 28th	Finkley Down Farm— Rabbit, Mouse and Dragonfly Kensington Palace— Robin & Kingfisher 9.00 Owl Class Assembly



### March 2024

Monday 4th	2.45pm PTFA Second Hand Uniform sale
Wednesday 6th	Kensington Palace— Owl & Woodpecker 9.00 Mole Class Assembly
Thursday 7th	World Book Day
Friday 8th	PTFA Bunny Bounce 2.30pm Coffee and Conversation with Mrs Tottem
Wednesday 13th	9.00 Robin Class Assembly
Saturday 23rd	11.00—14.00 PTFA Spring Fair
Monday 25th	2.30pm Phonics Screening Information talk for year 1 parents 7.00pm Phonics Screening Information talk for year 1 parents

## Beyond the Gate

Please [click here](#) to volunteer to help with Beyond The Gate this half term.

The following classes will be enjoying forest school; Please ensure your child brings suitable clothing and footwear.

Tuesday morning -	Badger
Tuesday afternoon-	Kingfisher
Thursday morning-	Deer
Thursday afternoon-	Owl

Dragonfly class will have a session on Tuesday and Thursday.



# Important Information

## Spring Fair Donations

Collections for the spring fair are in full swing! Your child receives a token each time they make a donation, which can be spent at the spring fair. Please have a look at the list below and send your items into the office.

<b>23rd February-</b>	<b>Bottle or wine/alcohol</b>
8th March-	Good condition children's games or books
15th March	Final donations to stalls (Easter egg, bottles, toys, teddies)
22nd March-	Homemade or shop bought cake (Nut free!)



## Attendance

If your child is unable to attend school due to illness please call 01252 628843 and select option 1 or email [absence@tweseldown.hants.sch.uk](mailto:absence@tweseldown.hants.sch.uk).

## Advertise with us!

Would you like to promote your company on our newsletter or outside school, please contact the office to discuss your options.

## Worries and concerns

Please remember to speak to your child's class teacher if you have worries or concerns rather than discussing on a group chat.



## Coco the Rabbit



If anyone would like to have Co-co for a few days over the summer holidays, weekends or any other school break, please email [pets@tweseldown.hants.sch.uk](mailto:pets@tweseldown.hants.sch.uk) and ask to be added to the list. Coco is very well behaved, and loves going on holiday!

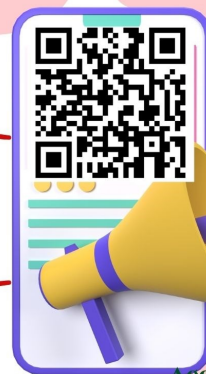
## Community consultation

ARMY  
WELFARE  
SERVICE



The Army Welfare Service are looking to start providing a service for your community

Come join us and have your say  
Date: 21/02/2024  
Venue: Quetta Park  
Pre-School, Church  
Crookham, GU52 8TJ



Pop In:  
0930,  
1330,  
1830

Open to all service families and all residents of or go to school in Church Crookham

Agencies attending  
Hive  
Citizens Advice Bureau  
Army Welfare service  
Junior Adventure Group

For any enquiries email: [samena.arshad-mehmood100@mod.gov.uk](mailto:samena.arshad-mehmood100@mod.gov.uk)

# Important Information

## Spring into action—Monday 26<sup>th</sup> February to Sunday 3<sup>rd</sup> March 2024.

A Spring into Action Toolkit will be shared with families and is also available at:

<https://myjourneyhampshire.com/springintoaction>



The toolkit provides families with a daily fun activity to enjoy. The activities can be tried during the daily walk, wheel, scoot or cycle to and from school, during an outdoor school activity or in your leisure time. You can follow the daily suggestions or mix them up to suit your family!

This year's theme is the senses, with ideas to help us engage with nature and think about how we use our senses to keep us safe. With a fun human and animal fact each day, there is lots to learn and do throughout the week.

The toolkit provides a fantastic opportunity for families to spend time talking and having fun together.

### Help with cooking



We would like to give all the children greater opportunities to cook during the school year. If you have the time and are able to give a regular or ad hoc slot to take a small group, please email [cooking@tweseldown.hants.sch.uk](mailto:cooking@tweseldown.hants.sch.uk). We need all volunteers to have a DBS check and basic food hygiene certificate, please contact the office to apply for one if you are interested in helping.

### Junk modelling for Year 2

Year 2 would like donations of cardboard boxes, tubes (not toilet rolls), plastic bottles, bottle tops and lids for junk modelling. Please deliver any contributions to the year 2 classrooms. Thank you!



# Important Information



## World Book Day

7th March 2024

### The Colour Monster

Please come to school in a colour, all the colours or as a monster to celebrate everyone being an individual on World Book Day. We will have lots of fun activities on the day and each child will receive a book token.



# What have we done this week?

## What have we been doing this week?

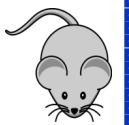
## Year R News



What a wonderful first week back! We started the week off with a bang by making and tasting our very own pancakes, and by taking part in a year group pancake race. The children had lots of fun flipping pancakes and cheering along their team mates in their houses.



This week we have started getting ready for our trip to the farm by reading the story 'What the ladybird heard'. We used our phonics to spell names of different farm animals, then applied this to simple sentence writing 'I can see a...' We have also enjoyed acting out the main parts of the story both in role and using character puppets which we had made.



In Maths we have been using the language 'more than', 'less than' and 'equal to'. We used a range of objects from around the classroom such as toys and pencils, then compared the groups using these new phrases. Could you help your child practise this at home by comparing different amounts of objects.



### Can you help us?

The YR team are working together with the children to give our outdoor area a new lease of life. If you have any of the following items that you would be happy to donate, it would be greatly appreciated:

- Small toys for our small world area e.g. dinosaurs, dolls, fairies, animals, cars
- Gardening tools for children
- Plant pots
- Gravel
- Small digging spades

Please hand them in to your child's class teacher.

Thank you for your support with this.

# What have we done this week?

## What have we been doing this week?

## Year 1 News



What an amazing week in Year 1! Tuesday was full of excitement when we all took part in pancake races! Everyone cheered and supported their friends. Back in class, we got involved with making our own batter and cooked pancakes to eat. We then used all the fun of the morning to write instructions about how we made our pancakes. We used time conjunctions such as first, then, next and finally to sequence our instructions.



On Wednesday, it was all aboard the Year 1 Express as we started our new topic. We listened to the noise of the trains, set up classrooms like trains and drew ourselves enjoying a train ride with our friends. We had a great time and we are all looking forward to finding out more about our 'All Aboard' learning!



In maths, we have started learning about the multiplication symbol. We have continued our counting in 2s, 5s and 10s and then drawn arrays to represent our counting. We have then shown that we understand multiplication can also be represented as repeated addition so  $3 \times 2$  can also be  $2+2+2$ .



## What have we been doing this week?

## Year 2 News



Welcome back Year 2!

What a busy start we have had. We have loved welcoming you all back into school, and hearing all about your half term breaks; it certainly sounds like you all had a great time!

We kicked the week off with our pancake races and did amazingly well with supporting one another in our houses. After all of the running, our teachers thought we deserved a treat so we got to make AND EAT our very own pancakes. This helped us with our English as we then looked at writing our own instructions to help someone who wouldn't know how to make their own. In Maths, we have started to look at fractions. We have been identifying  $\frac{1}{2}$  and  $\frac{1}{4}$ , and have been superb mathematicians with our problem solving too!



In PE, we have started to look at fitness and how important it is to keep fit, not only for our body, but our minds too! In Science, we carried out our own exciting experiment and looked at how different objects move in different ways. We observed the way the objects moved down a ramp, and documented our findings in a table. In History, we started our new topic on 'Queens'. As a class we have identified and compared the three Queens that are guiding our learning for the remainder of the spring term; test us at home to see if we can remember who they are.



# Beyond the Gate - Forest School



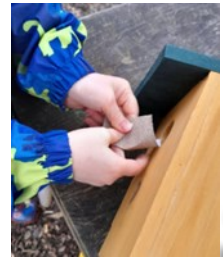
Signs of Spring are beginning to appear within the Beyond the Gate site – with the odd splash of colour being noticed by the children. They have spotted some daffodils (which were planted in the Autumn), crocuses and Lesser Celandine.

This week is National Nest Box Week – when we are encouraged to put up bird boxes (if we didn't in the Autumn)

to help our bird species thrive! <https://www.nestboxweek.com/>

The children have discussed why we need to help the birds find places to nest and why different birds need different styles of bird boxes.

If they wanted to, the children were given the chance to help prepare some bird boxes for our site. They used sandpaper to smooth down the hole and then



used an electric cordless drill to make ventilation holes in the boxes. Using real tools enables children to complete tasks successfully (we discussed why the palm drills were not appropriate for this job) and allows the children to learn how to use "risky tools" in a safe, supported way.

After that, some of the children painted the boxes to make them look attractive. We used safe paint which will not harm the birds. Research shows, that birds are not really affected by painted

bird boxes (although of course bright colours make them less camouflaged). Apparently nesting female are attracted to red.

Some of these beautifully decorated boxes will be on sale at the PTFA Spring Fair.

Our muddy site, saw the children relishing being back in the mud. We observed maths and science learning happening (without them realising) while they played with different receptacles and used guttering to create different water channels. Great collaboration was seen and heard too!



**Donations:** Mrs Dear would like to get the children involved in planting seeds Beyond the Gate. We have lots of seeds but no compost! If you have any spare peat free compost (or able to donate a bag), we would be grateful of this.

We would also like to increase our wildflower areas. Any donations of NATIVE UK wildflower seed would be welcome too!





# PTFA NEWS



## SPRING FAIR 23RD MARCH

**Volunteers  
needed**

We still need more volunteers if  
you can just spare 1 hour please  
sign up

Volunteers will get a free family ticket.  
Click below to sign up.

**CLICK HERE**



**MORE EASTER EGGS NEEDED -  
PLEASE SEND IN ANY DONATIONS**



## BUNNY BOUNCE 8TH MARCH

The children will take part in a  
bunny bounce around the school  
with bunny ears and a treat,  
Sponsorship forms coming this  
week, please tick gift aid if you are a  
tax payer

## WE HAVE LAUNCHED OUR SCHOOL LOTTERY

Tickets cost just £1

- All profits go to our school
- Local cash prize every week
- Chance to win the £25,000 jackpot!

To start supporting, visit:  
[yourschoollottery.co.uk](http://yourschoollottery.co.uk)  
and search for: Tweseldown Infants

